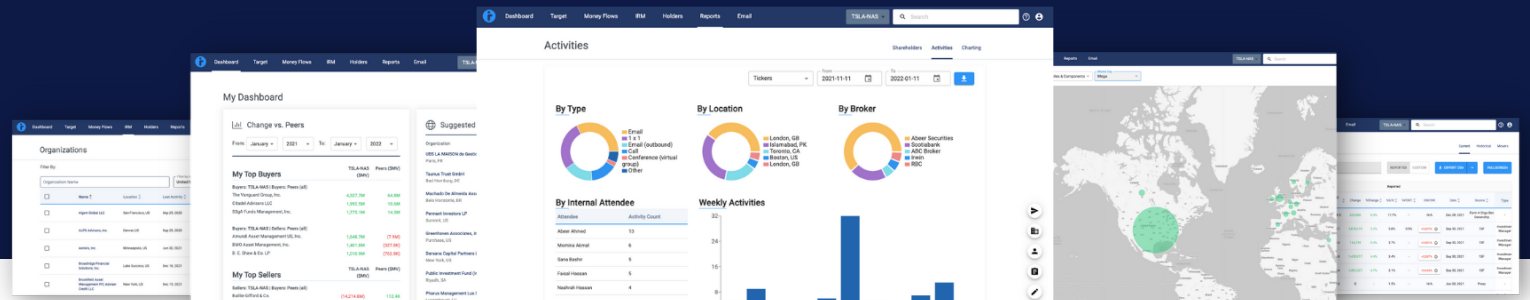


Capital Markets **Strategy** Services.

An **exclusive service** for Irwin customers to help navigate a rapidly changing capital markets environment by leveraging Irwin to provide differentiated and value-enhancing strategic advice and support to enhance your core responsibilities.



estimates trends & analysis, Irwin “Street View”, ownership & holdings analysis.

All the best of the Irwin platform, with the strategic support you deserve.

Irwin's Capital Markets Strategy Services supplement our platform's existing capabilities in investor relationship management, investor targeting, and shareholder surveillance.

Capital Markets expertise at your service, offering you a lens into how sell-/buy-side professionals would assess your business, and saving you time to focus on key strategic initiatives and building relationships. Available Capital Markets Strategy services include:

Board reporting

- Comprehensive board reporting services, customized to your company brand.
- Increased insight into your shareholder base, forward valuation and positioning relative to peers, and consensus estimates.
- Saving you time on monthly/quarterly reporting.

Includes: Share price & valuation trends, peer comparables, relative valuation analysis, consensus

Enhanced investor targeting

- A tailored list of investors/funds crafted using the powerful data within Irwin.
- Designed to increase the quality and diversity of your shareholder base, which will help you achieve a lower cost of capital.
- Save you time spent searching for new investors.
- Increase your preparedness and productivity in future meetings with investors.

Includes: Customized investor target list, detailed investor targeting report, and peer ownership analysis.

Analyst targeting

- Improve your understanding of relevant analysts within your industry.
- More easily distinguish between analysts based on criteria that is the most important to your business.
- Save you time spent searching for the right analysts to cover your company.

Includes: Peer analyst coverage overview, analyst targeting matrix, recommended targeted analysts.